

# CKD's ABSODEX Lineup can be used for any application

Excellent for Assembly/Inspection

**AX1000T Series**



Most suited for Precision Alignment/Positioning

**AX7000X Series**



High Precision  
(Repeatability)

High Accuracy  
(Runout/Indexing Accuracy)

Allowable Load Inertia  
(Moment)

**CKD  
ABSODEX  
LINE UP**

High Speed Operation

Variation  
(Torque, Interface)

Magnificent High Speed Operation

**AX2000T Series**



Superb for Assembly/Conveyance/Index tables

**AX4000T Series**



Space Saving

Great for miniaturizing equipment

**AX6000M Series**



**All actuators are absolute types**

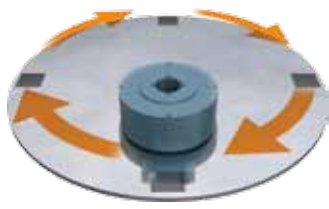
# USABILITY

## 3 user friendly features of ABSODEX

### Flexible Operation

---

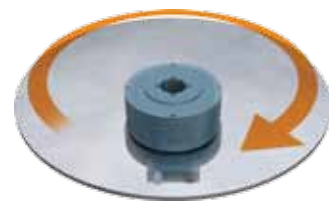
With an abundant programming function - realize the operation that you want.



Indexing



Oscillations



Oscillations

### Reduce Workload and Save Space

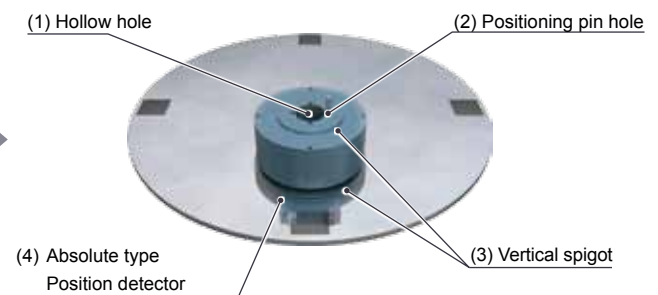
---

A simple design with 4 standard useful features.



AC Servo Motor

Motor+Timing belt



ABSODEX

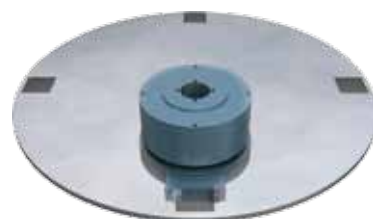
### High Reliability and Maintenance Free

---

No more damaged or worn gears from a gearless design.



Eventual gear damage and wear



No worries Gearless structure

# DRIVER

## Compatibility

### Freely combine drivers and actuators

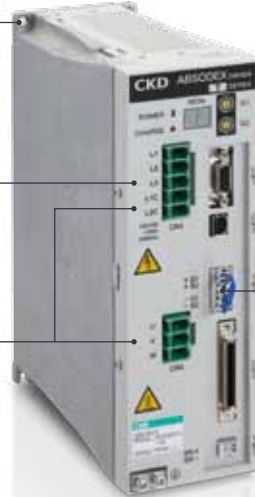
#### TS/TH Drivers

(AX1000T, 2000T, 4000T)

Mounting holes added

Separate main power and control power

Use of connectors



Terminal for the Safety function

With the STO Function (Safe Torque Off), one can easily incorporate it with the drive circuit to cut off power.

#### MU Driver

(AX6000M)

Uses 24 VDC  
Realized smaller dimensions.

Uses connectors

Main power and control power are separate



Mounting holes

Separate main power and control power

Uses connectors

#### XS Driver

(AX7000X)



### Great Usability!

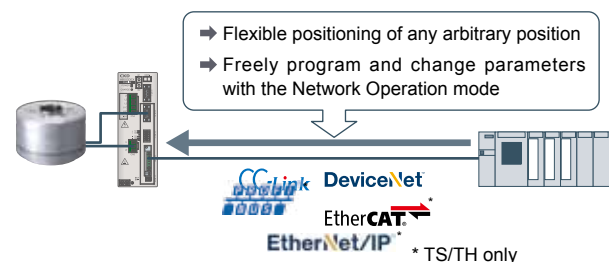
- No backup batteries needed
- Freely combine drivers and actuators

### Convenient functions

- Various functions for your usage!
- Segmented position output function

### Use IoT on your equipment!

- Monitor function (TS/TH/XS wiresaving serial communication)
- Network Operation mode (XS wiresaving serial communication)



# SOFTWARE

## Operation made easier

The AxTools is here to help you from operation settings to adjustments.

From experts to novices, the **AX Tools** is user friendly

Intuitive operation with a simple and easy to use interface.

Freeware

Use it intuitively

Use it easily

Desired conditions can be instantly implemented.

In equal segmental programming, only the number of partitions and travel times need to be input.

## Industry's 1st! Equipped with an AI that supports adjustments

### Conventionally...

- Tuning relied on experts
- Overseas startups were unstable
- Results of adjustments were difficult to judge



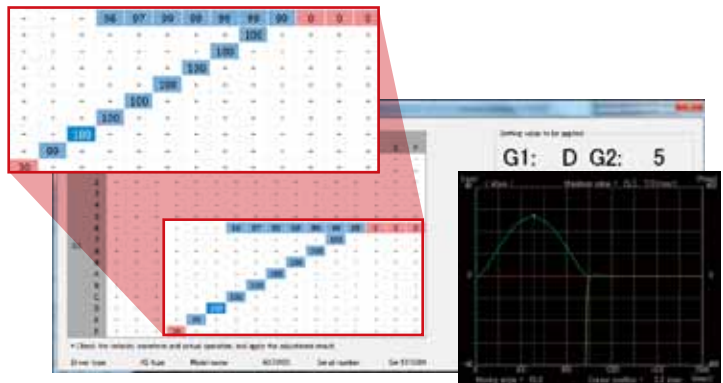
Anyone can use it

### Adjustments made by the AI

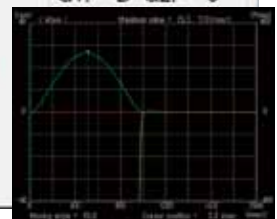
Input the conditions

Click

Data is acquired automatically and the most suited tuning is advised with a score



Also, simultaneous confirmation of the operation wavelength is possible

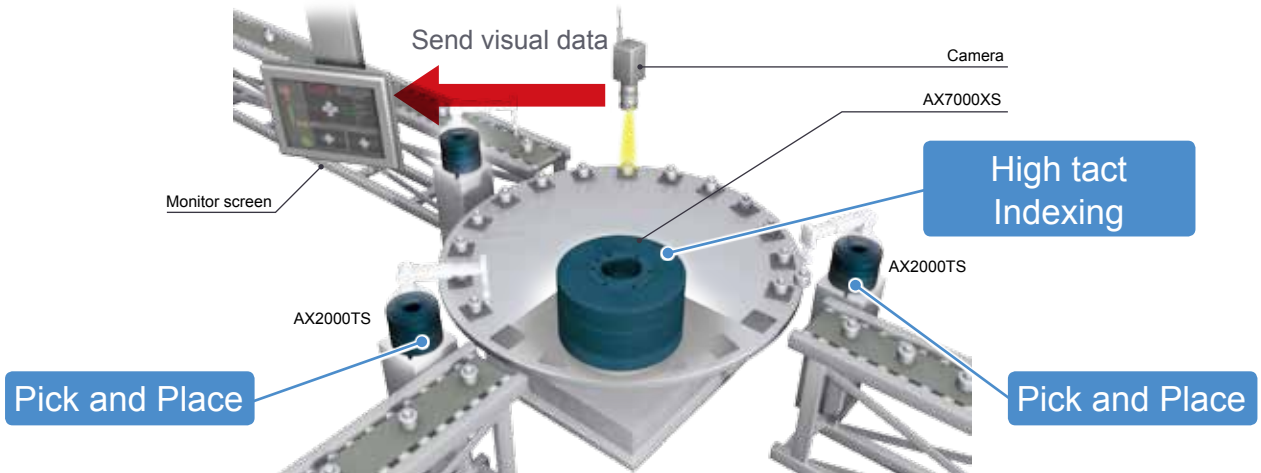


# USE CASE

## Operation examples

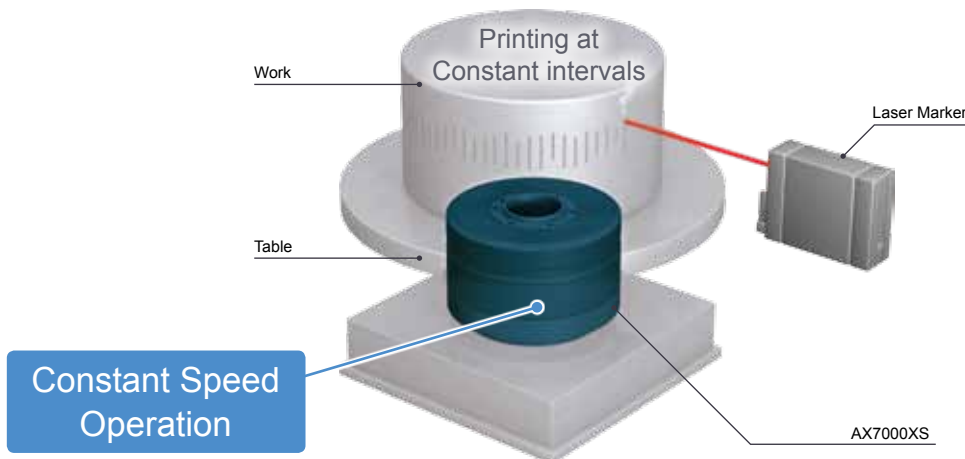
### Electronic Parts Inspection

Operate the AX with multiple machines and achieve high tact



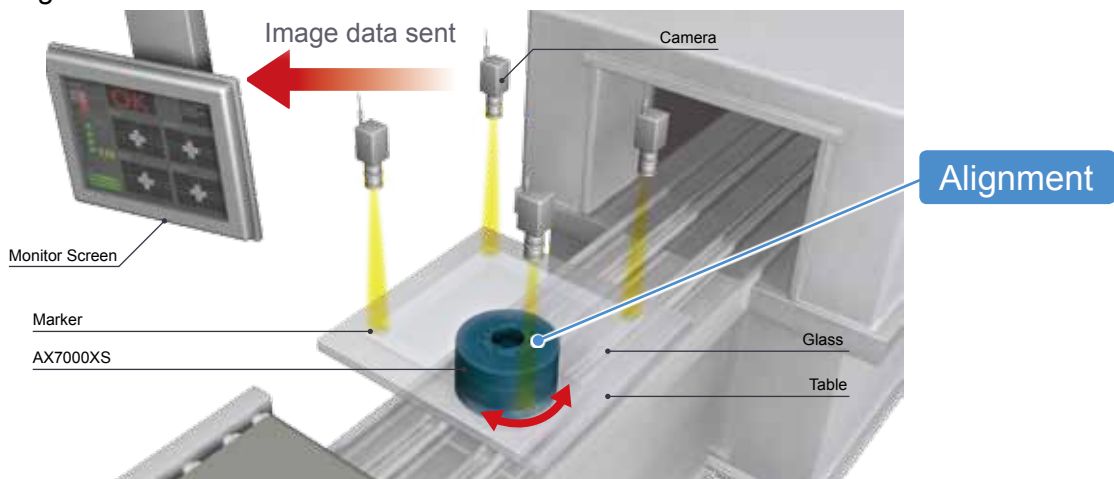
### Laser Labeling of Workpieces

Laser marking is done at constant increments.



### Laser Labeling of Workpieces

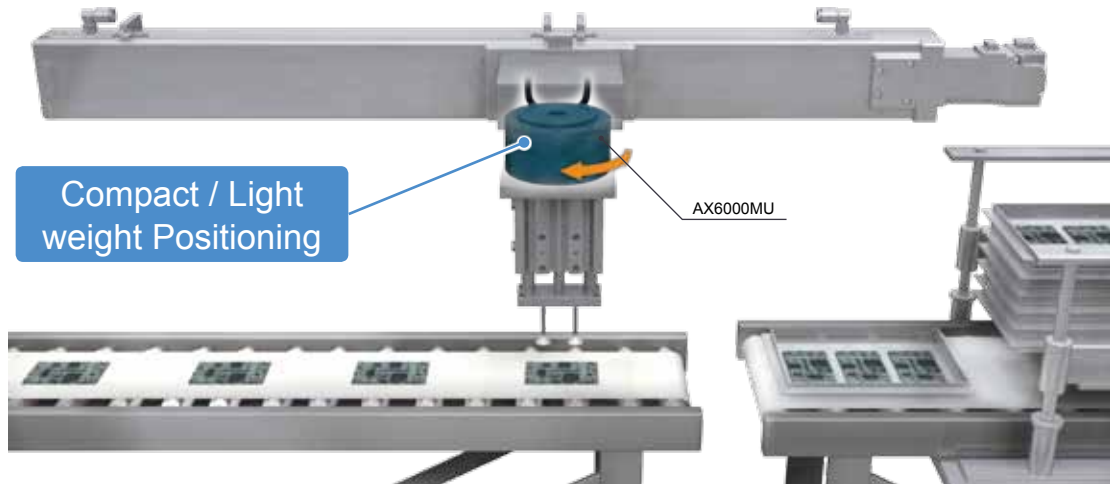
Laser marking is done at constant increments.



# USE CASE

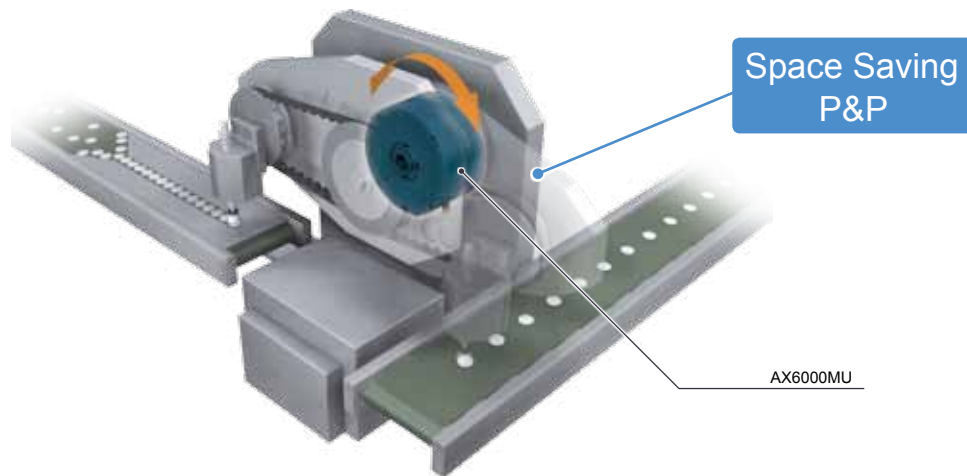
## Conveyor of Electronic Substrate

Rotate electronic substrates by 90°



## Pick and Place

Work is conveyed using an equipped parallel displacement mechanism.



## Assembly, Inspection Machines

Conduct setup changes without time loss

